

# Seeds

Carrs Billington supplies Seeds for Forage, Cereals, Environmental Stewardship and Game cover



Seeds of every type, backed with all-inclusive ranges of fertiliser, sprays, preservatives, twines, polythenes and machinery; does indeed allow “One-Stop-Shopping” for the grower.

# COWS THREATEN ACTION UNLESS CARRS BILLINGTON GRASS IS ON THE MENU!

The word is getting round that some dairy and beef cattle are getting better grass than others. And now they all want it - they want Carrs Billington grass, and yields could start to slip if they don't.

The high D value grass mixtures contain some of the highest rated varieties on the NIAB and SAC Lists - earlies, lates and intermediates carefully selected and blended to give you maximum productivity from your grazing or conservation programme. Your stock and your bank manager will soon see the benefits of Carrs Billington grass seed.

**MOY** The most persistent of all the available ryegrasses.

**SPONSOR** The late perennial ryegrass with the best combination of yield and quality.

**NAVAN** Late tetraploid perennial ryegrass. The highest yielding variety available.

**SPELGA** Quite simply the best intermediate perennial for High D yield.

**GLEN** High D value intermediate for intensive long term use.

**GILFORD** Especially high yielding late perennial for high density sward.

Talk to us now and start your own revolution.



Grass Seed  
supplied by

 **BARENBRUG**

## CARRS BILLINGTON - THE GRASS SEED COWS DEMAND

## Grass Seeds

Carrs Billington Agriculture provide a unique range of own brand and branded grass mixtures sourced from the world's leading plant breeders. This quality, traceable supply chain guarantees customers access to the latest plant breeding material providing confidence in achieving maximisation of grass potential.

The Carrs Billington **Premier Range** of grass mixtures is now well established as a market leader and can be seen across the company's trading area from the Midlands, Northern England, Wales and Scotland.

The Premier range of grass mixtures contain the latest varieties ensuring maximum production and profitability thus providing value for money.

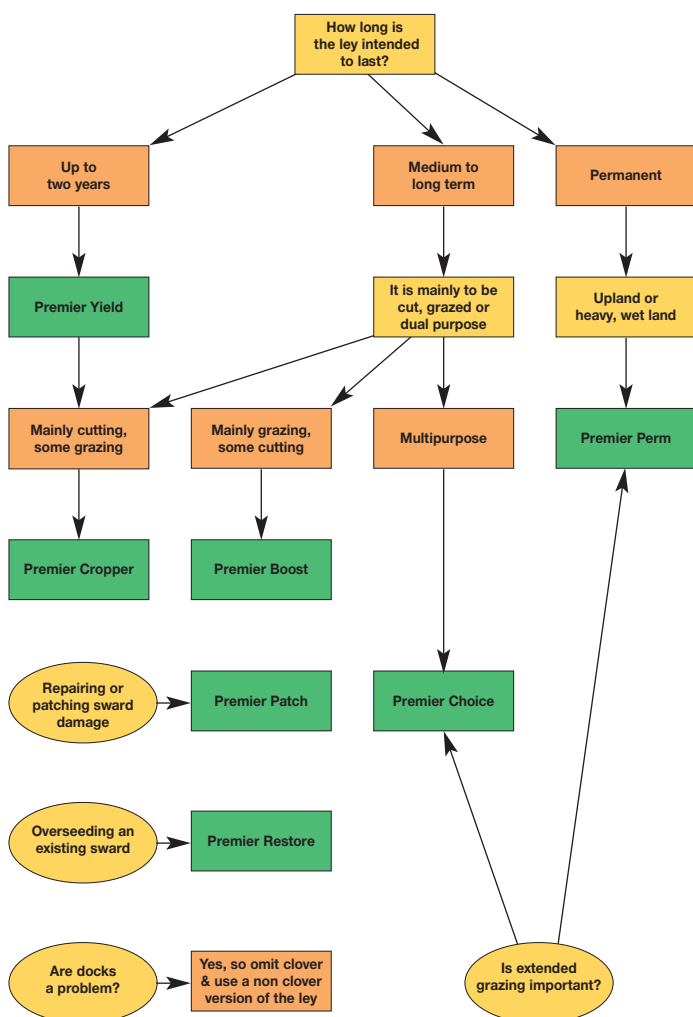
Carrs Billington are also main agents for the well known and highly regarded range of HF seeds from DLF Trifolium, a leading branded supplier.

Carrs Billington anticipates and reacts to changing demand and has seen in recent times an increasing call for amenity, horse, wildflower and wildlife mixtures.

From 2005 the introduction of Single Farm Payment and new voluntary Agri-Environmental schemes will see demand for an alternative range of mixtures.

Carrs Billington can offer from summer 2005 a full range of environmental mixtures satisfying the demands of the various schemes, as well as the budget of the grower.

All Carrs Billington branches and field sales staff are able to offer guidance on the wide range of seeds, which are available for direct delivery or collection from your local branch.



## Seeds available from Carrs Billington

### Grass

- Agricultural Leys
- Paddocks
- Lawns
- Landscape
- Organic
- Golf
- Sport
- CSS & Field Margins
- Straights
- Specials

### Fodder Crops

- Maize
- Rape
- Turnips
- Swedes
- Kale
- Fodder Beet

### Cereals

- Wheat & Barley
- Triticale
- Oilseed Rape
- Lupins

### Wholecrop Mixtures

### Arable Silage Mixtures

### Wildlife Mixtures

### Wildflower Mixtures

### Game Cover

- Maize
- Brassicas
- Millet & Sorghum
- Mixtures

### Pulses

- Peas
- Beans

## Short Term

### 4132100 - Premier Yield

**A rapidly establishing, versatile short term ley.**

*Designed for:*

- Intensive production over an 18 to 24 month period
- Up to 4 silage cuts with over winter grazing
- Long grazing season from early spring to late autumn
- Ideal as a catch crop, will give excellent production from a late summer sowing

*Benefits:*

- A highly productive Italian ley, which will give exceptional crops for silage, grazing or hay, from a high input system
- A mixture for the farmer who wants to maximise his own production from a short term grass crop

### 4132800 - Premier Patch

**The ideal repair and patching mixture.**

*Designed for:*

- Overseeding and patching damaged and poached leys
- Rapid establishment and aggressive growth to smother seedling weeds
- A rapid return to production from the ley

*Benefits:*

- Premier Patch is a specialist mixture, specifically developed to repair and rejuvenate damaged and poached leys



## Long Term

### 4132300 - Premier Choice

**A multipurpose, long-term ley, which is ideal for grazing and conservation.**

*Designed for:*

- A truly flexible ley, capable of being both grazed and cut
- Highly persistent for long term durability
- Uses varieties with excellent sward density to minimise poaching damage and weed encroachment
- The early spring growth makes it ideal for lambing and early turnout

*Benefits:*

- Premier Choice, is a highly flexible long-term ley, capable of producing excellent, season long grazing or conservation, with the added benefit of early season grass.
- Includes high sugar varieties like Anaconda and AberDart which will improve animal intakes and performance
- Now with Pastour, for its excellent yield and Comer for both yield and ground cover

Available without Ensign White Clover

### 4132400 - Premier Cropper

**A long-term top class cutting mixture which will also produce quality grazing.**

*Designed for:*

- Top quality silage production, with the option to graze
- Long-term production from a highly persistent ley
- Maximum production by using the top yielding varieties

*Benefits:*

- Premier Cropper combines the benefits of high yields of quality mid May silage production, with excellent sward density and outstanding mid season digestibility for highly palatable grazing, thus creating a highly flexible ley.

Available without Ensign White Clover

### 4132500 - Premier Boost

**A long-term intensive grazing mixture, with the option to take later cuts of quality silage.**

*Designed for:*

- Intensive production from grazing a highly palatable, very digestible ley
- Creating a tight persistent sward that is highly resistant to poaching
- Season long grazing from early spring to late autumn

*Benefits:*

- Premier Boost produces a dense leafy sward that is easily managed. The use of late heading varieties means that any topping can be kept to a minimum.
- Trials at Moore Park in Eire have shown that cows grazed on this type of ley will produce more milk.
- The varieties used have been selected for their persistence as well as their palatability and mid season digestibility to produce a long lasting, productive sward. Available without clover

Available without Ensign White Clover

## Permanent

### 4132700 - Premier Perm

**A long-term purpose permanent pasture mixture, ideal for extensive production.**

*Designed for:*

- Extensive, long-term flexibility, being suited to both cutting and grazing

- Outstanding persistency, using varieties with proven durability and winter hardiness
- Leafy quality production, with free nitrogen fixation from quality clovers
- Early spring growth, which makes it ideal for lambing

*Benefits:*

- Premier-Perm is a permanent pasture mix with excellent spring growth, designed for extensive production. Varieties have been selected for persistence and winter hardiness as well as yield and quality
- It also makes best use of white clover for both nitrogen fixation and improving the protein intake of the grazing animal
- The inclusion of extra Timothy guarantees performance in wetter, less fertile conditions

### 4190266 - Premier Restore

**A long-term mixture designed to restore a grazing or cutting sward to long-term productivity.**

*Designed for:*

- Increasing the proportion of productive ryegrass in the sward
- Reintroducing or increasing the clover content of the sward
- Increasing the quality of the grass for better animal performance
- Repairing the damage caused by poaching of grazing swards

*Benefits:*

- Premier Restore is a specialist mixture designed to increase the proportion of productive grasses and clover in long term swards by using overseeding techniques

### 4190256 - Premier Horse Paddock

**A long-term paddock mixture designed specifically for horses and ponies.**

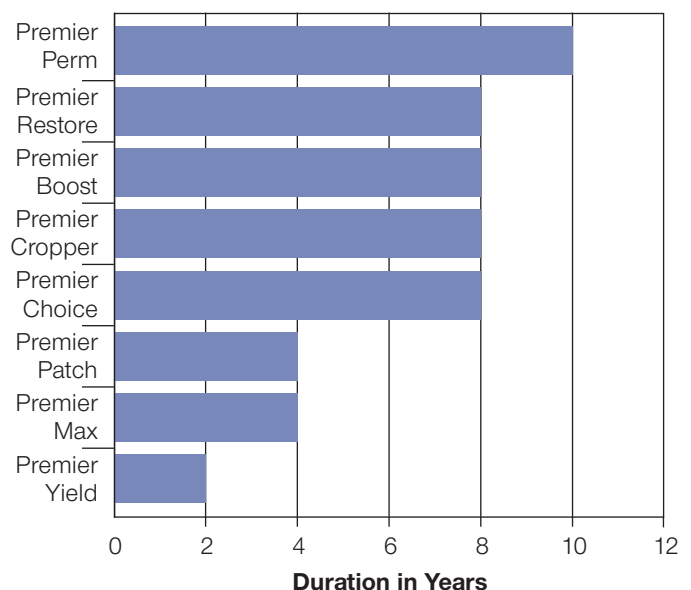
*Designed for:*

- True flexibility, a paddock that will provide both grazing and hay production
- High persistence, for long term durability
- Even production throughout the growing season
- Producing a good, springy, dense turf

*Benefits:*

- Premier Horse Paddock is designed to produce the dense, springy turf that horses love to graze and gallop on, with the option of taking a cut of quality horse hay

## Choice Chart



## Ensign White Clover Blend

The establishment, of a clover rich sward, which may be subject to varying management techniques and stock types. With this mixture of premium quality clover varieties, the clover profile in the sward will adapt to the type of management that it is given. Featuring the newly recommended, white cover, Crusader, the highest yield variety available.

25%	<b>Alice</b>	Large leaf white clover
25%	<b>Barblanca</b>	Medium large leaf white clover
50%	<b>Crusader</b>	Medium small leaf white clover

## Why use a blend of clover type?

- Different variations of white clover are best suited to different management, small leaf varieties are most suited to sheep grazing, Whereas large leaf varieties are most suited to silage production
- By using a blend of different varieties there is at least two that are best suited to whatever the management being applied to the sward.
- The use of a blend of different clovers broadens the genetic diversity, disease and pest resistance of the clover content of the sward.

## How will animals perform on a clover/grass sward?

- Animals prefer to graze a clover/grass sward; this results in higher voluntary intakes and better animal performance.
- In trials cattle grazed on a clover/grass sward had an intake of 9.2kg of dry matter per day and a liveweight gain of 1.1kg per day compared with those grazed only on grass of 6.7kg intake and 0.8kg/day liveweight gain.
- Trails with dairy cows have shown that that for each 10% increase of white clover content of pasture, milk yield increases of between 0.3 and 0.45 kg per cow per day.
- Therefore a sward which has a 30% clover content, which is an average for mid-summer, can be producing up to 1.35 kgs of milk per cow per day more from the clover.

## Are there any other benefits of white clover?

- White clover fixes atmospheric nitrogen making it available as a nutrient to feed the clover as well as the companion.
- It is estimated that white clover will fix between 100 and 280 kg N per Hect per year. The quantity of Nitrogen fixed depends on soil type and husbandry.
- Grass/clover swards without fertiliser Nitrogen can produce yields similar to those of pure grass swards receiving around 200 kg N per Hect per year.

- The presence of white clover will reduce the development of crown rust in the grass portion of the sward.

The inclusion of white clover in a sward will improve the nutritive value of the pasture markedly, with increases in voluntary food intake and nutrient supply, particularly protein.

## Organic Grass Seeds

### Premier Organic Yield

4.0 Kg	<b>Bartissimo</b>	Italian ryegrass (Dip)	<b>Organic</b>
1.0 Kg	<b>Barsilo</b>	Hybrid ryegrass (Dip)	
3.0 Kg	<b>Napoleon</b>	Intermediate perennial ryegrass (Tet)	<b>Organic</b>
1.0 Kg	<b>Delphin</b>	Late perennial ryegrass (Tet)	
3.0 Kg	<b>Merviot</b>	Red Clover	

### 12.0 Kg

The mixture is designed to give a high output of quality forage for either conservation or grazing with a persistency of up to 3 years. Italians and hybrids are used because they are significantly higher yielding perennials, however the inclusion of perennials puts a 'bottom' into the sward to suppress weeds, while allowing the clover to thrive. The red clover not only adds nitrogen fixation, but also greatly improves the protein content of the forage.

### Premier Organic Cropper

3.4 Kg	<b>Corbet</b>	Intermediate perennial ryegrass (Dip)	<b>Organic</b>
2.0 Kg	<b>Orion</b>	Intermediate perennial ryegrass (Tet)	
2.0 Kg	<b>Napoleon</b>	Intermediate perennial ryegrass (Tet)	<b>Organic</b>
2.0 Kg	<b>Lasso</b>	Late perennial ryegrass (Dip)	<b>Organic</b>
1.0 Kg	<b>Pommerol</b>	Late perennial ryegrass (Tet)	<b>Organic</b>
2.1 Kg	<b>Delphin</b>	Late perennial ryegrass (Tet)	
1.5 Kg	<b>Ensign</b>	White Clover Blend	

### 14.0 Kg

This mixture is designed for either conservation – with the first cut taken away in late May, grazing – the differences in variety growth habits will give the maximum season long grazing or a combination of both e.g. early grazing followed by conservation cuts. The variation in clover types in the Ensign Clover Blend gives at least two varieties that will thrive, no matter for what the ley is used, with the aim of building up the clover content of the sward to the optimum 40%.

### Premier Organic Boost

2.5 Kg	<b>Corbet</b>	Intermediate perennial ryegrass (Dip)	<b>Organic</b>
3.0 Kg	<b>Lasso</b>	Late perennial ryegrass (Dip)	<b>Organic</b>
2.0 Kg	<b>Gilford</b>	Late perennial ryegrass (Dip)	
2.9 Kg	<b>Pommerol</b>	Late perennial ryegrass (Tet)	<b>Organic</b>
1.1 Kg	<b>Delphin</b>	Late perennial ryegrass (Tet)	
1.0 Kg	<b>Comer</b>	Timothy	
1.5 Kg	<b>Ensign</b>	White Clover Blend	

### 14.0 Kg

This mixture is designed for those areas of the farm, which are expected to be intensively grazed. The ryegrass varieties used are all highly palatable with good digestibility, disease resistance and a low level of reheading, giving high levels of palatability. They are dense enough to compete well with weeds, while allowing the clover content to increase to the optimum 40%. The ley can also be conserved when it will produce very high quality Silage.

## Environmental and Stewardship Mixtures

Environmental and Stewardship schemes are becoming a much more important part of agriculture. Carrs Billington are able to give help and guidance to allow you to sow the best mixtures of grasses, with herbs and wildflowers, to meet the requirements of both the grower and the environmentalist.

Many other stock products not in this catalogue may quickly be obtained to order and supplied at keen prices.

## Single Payment Scheme and Stewardship (England)

The Single Farm Payment Scheme replaces most existing crop and livestock payments. To receive payments growers are asked to demonstrate that they are keeping their land in 'Good Agricultural & Environmental Condition' (GAEC) and are complying with specific legal requirements.

In addition to Single Farm Payments, there is a new voluntary agri-environment scheme which is open to all growers, it has three elements:

- **ENTRY LEVEL STEWARDSHIP (ELS)**  
a whole farm scheme open to all growers
- **ORGANIC ENTRY LEVEL STEWARDSHIP (OELS)**  
a whole farm scheme similar to ELS open to growers with organically farmed land
- **HIGHER LEVEL STEWARDSHIP (HLS)**  
a discretionary scheme, tailored to local circumstances
- **PAYMENTS**  
Both ELS and OELS work on a total farm points system and are worth up to £30.00 per hectare for ELS or £60.00 per hectare for OELS plus conversion aid. HLS payments are tailored to specific projects e.g. 6m buffer strips @ £400.00 per hectare or under sown spring cereals @ £200.00 per hectare.

To help growers meet the requirements of the different schemes Carrs Billington have developed a range of SFP mixtures that meet the requirements of the schemes. For HLS, mixtures can be tailored to the advice given to the grower by their RDS advisor.

**A full range of Grass and Fodder Seed mixtures for cross compliance and stewardship in Scotland are also available. Please contact your local branch or Area Sales Manager for further details**

## Mixtures

### SFP 1 Productive Mixture

This mixture is designed to create a sward that will give forage production under stewardship rules. The mixture will create a predominantly Timothy, Meadow Fescue sward of the type that was common in the UK before farming intensified.

### SFP 2 Non Productive Mixture

This mixture is designed to create a dense, leafy sward that will not produce excessive growth, similar to a golf course rough. It will produce a sward suitable for ground nesting birds and insects.

### SFP 3 Species-Rich Grassland

This is a similar mixture to SFP2 but the inclusion of Red Clover and Crested Hair Grass means it is suitable for re-creating species-rich grassland.

### SFP 4 Pollen and Nectar

This mixture incorporates flowering plants that will boost the numbers of pollen and nectar feeding insects. When the plots are cut to simulate late flowering, the cuttings can be ensiled to provide high protein silage, and autumn grazing will help to finish fat lambs.

### SFP 5 Beetle Bank

The mixture is designed to produce tussocky sward ideal as a habitat for ground nesting birds, small mammals and insects. It can be used in conditions of low fertility, anywhere little or no nitrogen will be applied.

### Set Aside Mixtures

Designed to produce a dense leafy sward that is easier and cheaper to manage than natural regeneration, will help to suppress weeds, yet give a useful amount of production outside the set-aside period. Because of its relatively short dense growth habit, the amount of cuttings left from the compulsory topping is minimal and should not damage the sward.

### Mustard

Mustard is a fast establishing, drought tolerant cover crop which will help suppress weeds and can then be ploughed as green manure.

### SFP 6 Wild Bird Seed Mixture

This mixture, mixed with any source of mixed cereal seed to provide a suitable food source for seed eating birds.

### SFP 7 Sheep Feed Mixture

This mixture produces a palatable, flexible sheep mixture that is hardy enough to graze into the spring. It is a practical alternative to either Swedes or Kale as a sheep forage crop.

### SFP 8 Catch Crop Sheep Feed

Designed to be drilled into cereal stubbles this mixture is an ideal catch crop for finishing lambs or flushing ewes, over the late autumn early winter period.

### SFP 9 Wild Flowers for Buffer Strips

This mixture of 95% fine grasses and 5% native perennial British wildflowers will produce an interesting and colourful area whilst being economic; all the wildflowers are considered non-toxic with the main flowering period through the months of June, July and August.

### Short Term Grass Cover Crop

Bartissimo is ideal for establishing short term grass cover onto maize or combinable crop stubbles. It can also be under sown under a maize crop, by broadcasting into the maize just before travelling through the crop without damaging it becomes impossible.

## Carrs Fertilisers product range for reseed

	SFP 1	SFP 2	SFP 3	SFP 4	SFP 5	SET ASIDE	MUSTARD	SFP 6	SFP 7	SFP 8	SFP 9	GRASS COVER	PREMIER RESTORE	PREMIER GRASS SEED + LEGUMES
GAEC2 POST HARVEST												X		
GAEC9 OVERGRAZING													X	
GAEC10 HEDGES					X	X								
SET ASIDE						X	X							
ENTRY LEVEL														
EB1,2,3,6,8,9,10					X	X								X
ED10														
EE1,2,4,5,6	X	X										X		
EE3					X	X								
EF1					X									
EF2,3 EG2								X						X
EF4,5 EG3				X										
EF7					X									
EG1														X
EG5								X	X					
EJ2												X		
HIGHER LEVEL														
HE10												X*		
HF12								X*						
HG6								X*	X*					
HJ3,4	X*	X*												
HJ5,6	X*	X*												
HK7,8				X*										
HK13,14				X*										
HK17				X*										
HK11												X*		

\* Mixtures are suggested for guidance, any mixtures sown must be agreed with the RDS Advisor, and any specified mixture can be supplied

## Cereal Seeds

A wide range of Autumn and Spring Cereal Seeds are offered by Carrs Billington along with a selection of dressings. For latest variety information and prices please contact your local Carrs Billington branch or Sales Manager.

The nutrient requirements of reseeds are different to those of established swards and using the correct fertiliser is therefore vital in the successful establishment of a new sown sward. Unlike standard NPK fertilisers, the reseeding products in Carrs Fertilisers unique 'New Choice' range are specifically designed to meet the nutrient requirements of reseeds:

- Emerging seedlings have a low nitrogen requirement. The New Choice reseed products are low in nitrogen to avoid the risks of scorch and nutrient losses
- The nitrogen is supplied in the slower acting ammoniacal form to provide sustained nitrogen supply during germination and initial establishment
- The phosphate is 'phased release' – i.e. a proportion is in the fast-acting water soluble form to satisfy the high P demands of developing roots and shoots, and the remainder is in a slow-release form to ensure sufficient nutrient after the water soluble part has been used
- Calcium is the building block of cell walls and therefore a vital nutrient during the development phase. Calcium will also improve sward palatability and encourage clover development. New Choice products are all high in available calcium
- Sulphur and potassium are provided to ensure disease resistance and winter hardiness in the young plants
- The New Choice range contains naturally occurring traces of copper, cobalt, zinc, selenium and manganese for soil, plant and animal health

Carrs Fertilisers are available from Carrs Billington Agriculture – contact your local branch or sales representative for further information, particularly on application rates (please note: the above rates are for guideline purposes only and advice should be taken from a FACTS qualified adviser before use)

NPK analysis	Ca	S	Situation/use	Rate (kg/ha)
<b>New Choice</b>				
5-26-13	23	5	Low P soils - i.e. index < 2 On soils where P & K are balanced. Where reseed is for grazing. Suitable for reseeds throughout the season. When organic manures are used.	500-625
6-21-28	8.5	3.4	Low K soils - i.e. index < 2 On light, sandy soils. Where reseed is for cutting. Suitable for reseeds throughout the season. When no organic manures are used.	500-655
6-40-0	26	6	Very low P soils - i.e. index 0 Upland / hill rejuvenation.	375-500
<b>Scotphos Gafsa</b>				
0-29.5-0	49	3.5	Approved for organic farming. Ideal for maximising establishment of Carrs Billington's organic seed.	375-500
<b>Multi-Choice</b>				
7-21-14	20	5	Ideally suited for equine pastures - reseeding and pasture rejuvenation. Use with Horse Master grass seeds.	250-375
7-21-14	20	5	Ideally suited for amenity purposes. Lawn reseeds and rejuvenation. Use with Carrs Billington's amenity grass seeds.	

## ALEXANDER HARLEY SEEDS SEED SPECIALISTS

*Pleased to be  
Quality Feed Suppliers  
to Carrs Billington  
Agriculture*

**Alexander Harley Seeds (Milnathort) Ltd.**  
Milnathort, Tayside  
KY13 7RF, Scotland

Telephone: (01577) 862586  
Fax: (01577) 862823







# Game Cover Selector

Our countryside is ever changing and leisure activities are becoming an important part of the rural economy. Consequently, more farms and estates see managing their shoots and environmental conservation as one entity.

A successfully managed shoot is both profitable and rewarding as it contributes positively to the landscape and the environment.

## Wild Bird Cover

The environmental benefits of wild bird cover can be especially rich if the cover is left in place for two years or more. Wild bird cover can be left on the same area of set-aside indefinitely, but the cover must remain an unharvestable mix of at least two crop groups that are not usually sown for agricultural or horticultural purposes with no single crop group predominating.

Variety	Cover	Feed & Cover	Northern usage	Duration	Sowing rate kg/acre	Sowing date	lowest pH tolerance
Artichokes	✓			5 yr +	500	❄️ Spring	5.5
Buckwheat	✓	✓		1 yr	20	❄️ Spring	6.0
Canary Grass (arundinacia)	✓		✓	5 yr +	2.5	Spring	6.0
Holdfast Canary Grass (aquatica)	✓		✓	5 yr +	2.5	Spring	6.0
Jonty	✓		✓	1 yr	1-2.5	Spring/Autumn	5.4
Kale	✓		✓	2 yr	1.5	Spring	5.4
Maize	✓	✓		1 yr	1 pack	❄️ Late Spring	5.6
Mustard	✓		✓	1 yr	5	❄️ Spring/Autumn	5.4
Quinoa	✓	✓	✓	1 yr	2	❄️ Spring	6.0
Sorghum – Dwarf & Giant	✓			1 yr	8 & 12	❄️ Spring	6.0
Sunflower – Dwarf & Standard	✓	✓		1 yr	5	❄️ Late Spring	6.5
Texsel Greens	✓		✓	1 yr	2.5	Spring	5.4
White Millet	✓	✓		1 yr	5	❄️ Spring	6.0
Yellow Blossom Clover	✓		✓	2 yr	2.5	Spring	6.0
Linseed	✓	✓	✓	1 yr	25	Spring	6.0
Triticale	✓	✓	✓	1 yr	50	Autumn/Spring	4.9
<b>Mixtures</b>							
Ambush Millet Mix	✓	✓		1 yr	5	Spring	6.0
Kwik Fix	✓			1 yr	5	Autumn	5.5
Late Cover Mix	✓			1 yr	6	Spring/Autumn	5.4
Millgame Millet Mix	✓	✓		1 yr	5	Spring	6.0
Northern Star Mix 	✓	✓	✓	1 yr	20	Spring	5.6
Overdrive – Quinoa/Kale 	✓	✓	✓	1 yr	2	Spring	6.0
Sundown Mix 	✓	✓		1 yr	15	❄️ Late Spring	6.0
Sure Fire Kale	✓		✓	2 yr	2	Spring	5.4
Traditional Game Cover Mix 	✓	✓		1 yr	10	Spring	6.0
Triple Maize Blend	✓	✓		1 yr	1 pack	❄️ Late Spring	5.6
<b>Nesting &amp; Rearing Mixtures</b>							
Brood Rearing Mix	✓		✓	1 yr	42	Autumn	5.8
Rearing Pen Mix	✓		✓	5 yr +	13	Spring/Autumn	5.8
Nesting Mix	✓		✓	5 yr +	5	Spring/Autumn	5.8
Woodland Rearing Pen Mix	✓		✓	5 yr +	13	Spring/Autumn	5.8

❄️ Frost susceptible

GP General Purpose

 Suitable for Wildlife set aside cover



DLF Trifolium are members of the Game Conservancy Trust and support the role they play in 'Conservation through wise use'.

We are delighted to work closely with FWAG (Farming and Wildlife Advisory Group) and have access to a great source of information and advice. 'FWAG exists to provide farmers, landowners and other clients with the best opportunity for environmental gain through cost effective, quality solutions'.

Flea beetle treated seed should only be drilled and not broadcast.

## Establishing your Gave Cover Crops

Game cover crops will only reach full potential if they are well managed.

Many tips are given with the individual crop headings; below some more general considerations are highlighted which will help to ensure your game cover is successful and a profitable shoot achieved.

Seed Bed Fertiliser Req. (kg ha)			Drill Depth (cm)	Row Width if drilled (cm)
N	P	K		
Crop grows strongly on most soils			n/a	150
35	105	210	B/C	B/C
55	28	28	1.5	70-90
55	28	28	1.5	70-90
110	55	55	1-2	Varies
100	50	120	1	52
185	90	220	6	75
Lodging can be brought on be excess fertiliser			0	Varies
100	50	120	2.5	45
100	50	120	2.5	45-50
Ensure adequate P			4-5	75
110	55	55	1-2	Varies
60	30	30	1	37-45
30	0	0	0.5	75
40	75	65	1-2	8-18
125	0	0	2.5	12-16
<hr/>				
60	30	30	2.5	37-45
Lodging can be brought on be excess fertiliser			1-2	40
55	28	28	1-2	B/C
60	30	30	1	37-45
75	37	37	2.5-3	15
100	50	120	2.5	45-50
60	60	80	6	100
100	50	120	1	52
80	40	96	2.5	B/C
185	90	220	6	75
<hr/>				
25	125	125	1-1.5	30
50	125	125	0.5	B/C
50	125	125	0.5	B/C
50	125	125	0.5	B/C

**B/C = Broadcast**

### Cultivations

- ✓ A well prepared seed bed is essential for crop health and development.
- ✓ Generally, ploughing and rapid consolidation to conserve moisture is the ideal start.
- ✓ Moisture retention is very important.
- ✓ Ensure the seed bed is fine and firm; this will reduce the risk of slug activity.

### Drilling

Where possible we recommend drilling game cover crops. This ensures accurate seed depth and row width and will also improve bird holding and driving capability.

### Weed Control

The stale seed bed technique is a well proven weed control system.

- i.e. Early cultivation
- Encourage seeds to germinate
  - Spray weeds approximately one week before sowing

This technique is very useful where mixtures are grown and no herbicide can be recommended. Atrazine can be used on several game cover species i.e. Maize, Millet & Sorghum. (Ask your Agro Chemical consultant for full recommendations.)

### Flea Beetle Alert

- Brassicas (Kale, Rape, Texsel Greens and Jonty) are vulnerable to attacks of Flea Beetle.
- Chemical treatment will be required immediately if holes are seen in the young leaves
- Increasing soil fertility and seed rate helps speed crop through critical growth stages.
- Keeper Kale is available with Flea Beetle control chemical treatment (Combicoat).



**A LEGEND IN ITS OWN TIME**



# Camelot

## Forage Maize

**Combining extreme earliness with yield and high forage quality**

- Outstanding whole plant digestibility and starch content
- Very high resistance to lodging
- Exceptional earliness with good yields



## **HIGH SUGAR GRASS MIXTURES**



## **THE GENUINE ARTICLE**

**PROVEN** 6% More Milk  
25% Greater Intake  
20% Greater Liveweight Gain

**Bred in Britain to contain high levels of sugar**